

maxell

I Line Shaver

MXIS-100

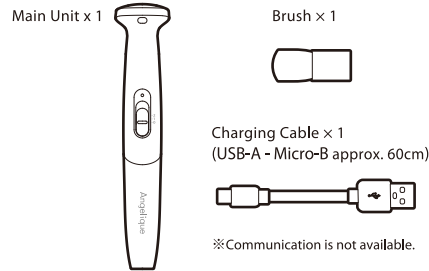
PA1661-00

* Do not wash

User manual

Thank you for purchasing this MAXELL product. Before use, make sure to read this Instruction Manual and use the product correctly and safely.

Contents of the package



1 Introduction

About the user manual

- This Instruction Manual may be subject to change without prior notice.
- In order to improve the product, external appearance or part of the specifications may be subject to change without prior notice.
- Unauthorized duplication of part or all of this Instruction Manual without permission is prohibited except for the case of personal use. In addition, do not reprint this Instruction Manual without permission.

Disclaimer (See the warranty certificate for details of the warranty.)

- Maxell shall not be responsible for any damage caused by fires, earthquakes, action of a third party, any accidents, intended or unintended misuse or other usage under abnormal conditions.
- The warranty stated in the warranty certificate is all we warrant, and we do not warrant anything except for this warranty including express warranty and implied warranty.
- Maxell shall not be responsible for failure due to any damage caused by usage other than described in the instruction manual.

- This product is not being designed to be any equipment or device which could be concerned with human life such as medical device, nuclear device, astronomical device, transportation device etc., nor equipment or devices which requires high reliability. In case this product is used for the above equipment and/ or systems, Maxell do not responsible for any injuries or fire accident cause by the failure of this product.

2 Safety Caution

Please strictly follow

	Danger	If it is handled incorrectly, the user may suffer death or severe injury*1 and the urgency is high.
	Warning	If it is handled incorrectly, it is assumed that the user may suffer death or serious injury*1 .
	Caution	If it is handled incorrectly, it is assumed that the user may suffer minor injury*2 or there is a possibility that property damage*3 may occur.*

- *1: Severe injury is indicated by those that have after effects such as blindness, injury, burns (high temperature burns/low temperature burns, chemical burns), electric shock, fracture, poisoning, etc. and those requiring hospitalization or long-term regular hospital visits for treatment.
- *2: Minor injury refers to hurt, burnt, electric shock, etc. which do not result in hospitalization or long-term follow-up consultation.
- *3: Property damage refers broad damages to houses or properties and domestic animals/ pets.

Danger

Take power only from the USB port
When charging, please use USB port of computer etc. or USB adapter.
Using other power exceeding USB rating may result in heat generation, ignition, malfunction, electric shock or injury.

Warning

Check for any blade deformation or damage before use or when attaching/ detaching the cover
It may cause injury.

Do not share a product with multiple people, such as family members or others
Doing so may cause infection or inflammation.

The following people, please consult a doctor before use
Consult a doctor before use if you are a outpatient, have a medical condition, have a sensitive skin, are pregnant or suspect you have allergies. In addition, even if you do not meet the above category, if any abnormalities appear, stop using the product immediately and consult a doctor.

Do not use if you have a sunburn, skin problem (rough skin, blemish etc.) or injury
Symptoms may worsen.

Do not use the product in environments where it is exposed to liquids such as water
The main unit is not waterproof. Do not use it in water or in an environment where it may get wet. Doing so may cause overheating, electric shock, malfunction or injury.

Do not use the product with wet hands
It may cause overheating, electric shock, malfunction or injury.

Examples of Symbol		Stands for prohibited actions when handling the product. Graphic symbols representing specific instructions are shown in black colour in the shape of
		Stands for caution to fire, explosion, high temperature when handling the product. Graphic symbols representing specific instructions are shown in black colour in the shape of
		Stands for instruction which must be followed. Graphic symbols representing specific instructions are shown in white colour in the shape of

Do not touch leaked liquid
Please do not touch the leaked liquid. If liquid leaks from this device and gets into the eye, do not rub. Rinse with plenty of clean water immediately and consult a doctor. It may cause blindness.

Do not use for and any purposes other than treating V line and I line
It may cause injury or damage to the main unit.

Use and store it out of reach of children
It may cause injury or accident.

Do not use if there is an abnormality such as heat generation, discoloration, deformation or unusual smell during storage or use
It may cause fire, explosion, leakage or injury.

Charge and use within the temperature range of 10~35°C
Charging and using at temperatures outside this range may cause leakage, overheating, breakage, or malfunction.

If the charging is not completed within the predetermined charging time, please stop charging
It may cause leakage, overheating, fire or breakage.

Make sure that the AC adapter is fully inserted
If it is not fully inserted, it may cause an electric shock or a fire due to dust.

If an abnormality occurs during charging, immediately disconnect the AC adapter from the outlet
Failure to do so may cause smoke, fire, explosion or malfunction.

Do not repair, modify or disassemble these parts
Overheating, ignition, fire, breakage, leakage, malfunction, injury may occur.

Do not put into fire
This may result in ignition, heat, breakage.

Caution

Do not use shaving cream, cold cream or milky lotion
It may cause clogging of the blade.

Do not use or store in humid environment such as bathrooms
Doing so may cause overheating, electric shock, malfunction, mold or rust.

If not used for a long period of time, please charge the battery once every 3 months
Battery may deteriorates and cannot be used.

Do not press against to the skin
It may cause injury.

Do not allow a strong impact by stepping on or dropping
Deformation may cause liquid leakage, overheating, fire, explosion or malfunction.

Do not place combustible or heavy objects on, cover or wrap with blankets or cushions
It may cause overheating, fire, explosion or liquid leakage.

Do not place the product in cooking appliances such as microwave ovens or high-pressure containers
It may cause overheating, smoke or fire.

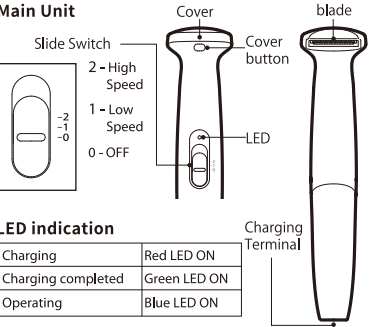
Do not use for pets
Pets may cause burns and injuries.

Do not apply excessive force
It may cause deformation, leakage, heat, ignition, breakage, failure.

Do not put the blade against hard objects.
It may cause deformation, damage or injury.

Do not use the product in an unstable posture.
It may cause you to fall and cause injury.

3 Name of Each Part



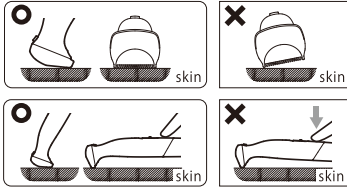
LED indication	
Charging	Red LED ON
Charging completed	Green LED ON
Operating	Blue LED ON

4 Applicable Parts

I LINE		
V LINE		
O LINE		

5 Precautions Before Use

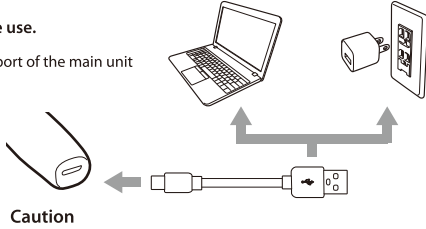
- Before turning on the power, practice shaving on your arms or legs.
- Look in the mirror and shave the hair growing around, taking care not to touch the center area with the blade. In the meantime, make sure the blade is horizontal against
- the skin.
Do not force the shaver against the skin, always apply a “lightly stroke” against the skin.



6 Charging

This product has a built-in lithium ion battery.
After purchase, please charge the battery before use.

1. Connect the included charging cable to the USB port of the main unit and your PC or AC adapter with USB terminal.
(Package does not include AC adapter)
2. The red LED lights up and charging starts.
3. When the green LED lights up, charging is complete. (charging time: approx. 2.5 hours)
4. Remove the charging cable.



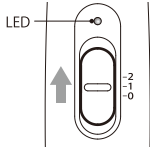
Caution

- Charging time is approximately 2.5 hours. (Charging time varies depending on the remaining battery capacity and charging environment.)
- Button operation is disabled during charging.
- When charging, set the slide switch to position 0 (OFF).
- Only use the included charging cable.
- Charge the battery in an environment of 10~35°C.
- If not used for a long period, charge it once every 3 months. The battery may deteriorate and cannot be used.

7 How To Use

Check that the blade is not damaged or deformed before use.

1. Slide the slide switch to position 1 (low speed) or position 2 (high speed) to turn on the power. Make sure that the LED turns blue in the sliding position and operate.
※Do not touch the blade while the power is on. Doing so may cause injury.
2. Please look in the mirror in a posture that is easy to shave.
Be careful not to let the blade touch the center area (the part without hair.)
※For safety, this product is designed not to be able to completely shaved.
※Please move the shaver by stroking vertically, does not press hard against the skin or move sideways.
3. After use, set the slide switch to position 0 (OFF).



Caution

- The product can be used only for I line and V line. It cannot be used for other parts.
- Do not use shaving cream, cold cream, soap etc. as they may cause clogging of the shaver.
- Do not use on sunburn, skin problems (rough skin, blemishes etc.), membranes without hair, warts or moles and their surroundings or areas with injuries.
- Use the product in a posture where your body is stable so as to avoid falling over.

8 Maintenance

Before cleaning the product, make sure that the battery is not being charged and that the slide switch is set to position 0 (OFF).

Maintenance of the main unit

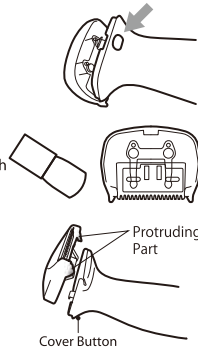
- Wipe off dirt with a dry soft cloth. If it is heavily soiled, wipe it off with a cloth dampened with water.
- Please clean the blade according to “Maintenance of the blade”.

Maintenance of the blade

1. While pressing down the cover button at the top of the main unit, lift up the cover and remove the cover.
2. After removing the cover, clean the blade and its surroundings with the attached brush.
※The blade is coated with grease for smooth operation. Do not wipe the grease with a tissue or cloth.
3. When attaching the cover, align 2 protrusions on the main unit together, then press down the cover button on the main unit to secure it to the main unit.

Caution

- Do not use shaver oil.
- This product is not waterproof. Do not wash.
- Do not use alcohol, benzene, thinner etc.



9 Troubleshooting (When problems arise)

Symptom	Cause	Solution
LED does not light On	Battery is empty	Please charge
Poor Cutting Performance	Hair or dirties has accumulated inside the cover.	Please perform regular maintenance.
	The blade is damaged or deformed.	Please stop using the product.
	Hair is too long.	Hair that is too long cannot be shaved, please cut it to an appropriate length before use.

10 Specification

Main Unit	Dimensions	W31×H151×D32mm
	Weight	Approx. 45g
	Input voltage / current	DC 5V/ Max 200mA
	Built-in battery	Lithium ion battery 3.7V 300mAh
	Charging time	Approx. 2.5hours
Charging Cable	Length	Approx. 60cm

11 Discard this product

⚠ Caution Disposal of rechargeable batteries

The built-in rechargeable battery can be recycled.
Do not remove the rechargeable battery yourself, please contact our Hong Kong agent customer service center.
For details, please visit government website or consult your property management office for rechargeable battery collection / recycling.



Li-ion 00

Maxell Asia, Ltd.

<http://www.maxell.com.hk>

Maxell, Ltd.

<http://www.maxell.jp>